



HUCKLEBERRY
 **YOUTH**
PROGRAMS

SAFETY • HEALTH • JUSTICE • EDUCATION

2016 ANNUAL REPORT
July 2015 - June 2016

Dear Friends of Huckleberry Youth Programs,

Our 2015-2016 Annual Report gives our staff and volunteer Board the opportunity to provide our sponsors, donors, and friends an overview of the past year and celebrate some incredible accomplishments within our core programs. It also gives us a chance to consider and examine Huckleberry's role in our current and ever changing society as we continue to move forward.

In 2017, Huckleberry turns 50! From our beginning as the nation's first shelter for runaways, Huckleberry has believed all youth and their families deserve and should have access to four fundamentals: Safety, Health, Justice, and Education. We strive to embody these core principles in all of our work.

Safety: Every young person's right to be safe was our first priority when Huckleberry House opened its doors on June 18, 1967. This past year, Huckleberry piloted San Francisco's first 24-hour response for commercially sexually exploited children (CSEC). Now called the Huckleberry Advocacy & Response Team (HA&RT), we provide crisis and case management services to youth who have been, or who are at-risk of being, sexually trafficked in San Francisco, moving them from exploitation to safety.

Health: Recognizing the right of every youth to access quality, culturally and linguistically competent physical and mental health care, our two youth clinics in San Francisco and Marin remain pillars for all Huckleberry services. This year, Huckleberry became one of the only youth clinics in San Francisco to provide pre-exposure prophylaxis (PrEP), a daily pill taken to prevent HIV exposure, to at-risk young adults. In Marin County, Huckleberry remains the only level one outpatient treatment center for adolescents with substance use disorders.

Justice: The resiliency of young people and their ability to get back on track despite substantial challenges are qualities that inspire us daily. Over the last 15 years, Huckleberry's Community Assessment & Resource Center (CARC) has been a key factor in significantly decreasing detention bookings for San Francisco's youth. This year, Huckleberry seeks to further strengthen our juvenile justice diversion programming by partnering with select schools to reach young people in 7th and 8th grades, before an initial arrest occurs.

Education: The Huckleberry Wellness Academies in both counties continue to prepare youth, who otherwise would not be able to pursue a post-secondary education, for college and careers. In 2016, 100% of our seniors graduated from high school and matriculated into colleges across the state, including: UC Berkeley, UC Davis, Santa Clara University, Dominican University, and Sonoma State. Ninety-two percent of those students completed a professional internship before college at organizations such as Kaiser Permanente and Marin Community Clinics.

As we celebrate our 50th Anniversary, we truly understand that Huckleberry's services remain just as critical now as they were when we opened our doors. Our belief that all youth and their families deserve safety, health, justice, and education continues to be challenged; but together with our donors and partners, we will continue to work so that all youth and families have the chance to succeed. Now and in the future, we THANK YOU so much for your broad, generous, and meaningful support. It makes all the difference in the lives of the youth and families we serve.



Douglas Styles, PsyD
Executive Director



Leonard Berry
Board President





A Brief History – A Look Back at 50 Years of Huckleberry

Fifty years ago, San Francisco famously experienced the “Summer of Love.” Thousands of teens converged on the city at that time, many of whom were runaways who had left their homes and families in other cities and states. Some of these youth wandered the Haight

without money, friends, or connections, putting themselves in unsafe situations. In response, “Huckleberry’s For Runaways,” the first youth shelter in the country, opened its doors on June 18, 1967 with the support of the Glide Foundation and the San Francisco Foundation. During its first full year in operation, Huckleberry’s shelter served 664 youth in crises.

Called “Youth Advocates” from 1969-1998, Huckleberry began expanding its programming based on the changing needs of youth and testified before Congress to support the Runaway Youth Act of 1974. Huckleberry opened Nine Grove Lane youth shelter in Marin that same year. From 1988-1992, Huckleberry created one of the first HIV prevention programs for youth, which the U.S. CDC then recognized as a national model. This groundbreaking program led to the founding of Huckleberry’s Cole Street Clinic, which still provides primary and reproductive care and mental health services to youth and young adults.

While continuing to strengthen and expand its programs in San Francisco, Huckleberry responded to a rise in adolescent

STDs and lack of teen health services in Marin, by opening the Huckleberry Teen Health Program youth clinic in 1996. In 2000, Huckleberry became the lead agency in San Francisco’s Community Assessment & Resource Center (CARC), a new alternative to juvenile detention and incarceration for arrested youth. In 2008, Huckleberry implemented the Huckleberry Wellness Academies, a college to career pipeline program for first generation youth. As a result of our continued innovation in youth and family services, the National Network for Youth named Huckleberry Youth Programs the “Agency of the Year” in 2010.

In 2015, Huckleberry piloted the first SF youth-focused program for commercially sexually exploited children (CSEC). The program is now called the Huckleberry Advocacy & Response Team (HA&RT). That same year, Huckleberry started on-campus substance abuse counseling at Marin’s first Wellness Center at Redwood High School and received a multi-year state grant to expand our counseling program across both counties.



Huckleberry House at 1292 Page Street in San Francisco



We are celebrating our 50th all year!

Please join us for the following 50th Anniversary Events

Huckleberry 50th Anniversary Day of Service

Saturday, April 29, 2017

McLaren Lodge
501 Stanyan Street
San Francisco, CA

9:45am-1:00pm

Huckleberry 50th Anniversary Concert and Benefit

Saturday, May 20, 2017

Great American Music Hall
859 O’Farrell Street
San Francisco, CA

7:00pm-11:00pm

Huckleberry 50th Anniversary Block Party

Sunday, June 18, 2017

Huckleberry House
(where it all began 50 years ago on June 18, 1967)

1292 Page Street
San Francisco, CA

11:00am-5:00pm

Huckleberry 50th Anniversary Celebration

Thursday, November 30, 2017

The Four Seasons
San Francisco

6:00pm-10:00pm

Huckleberry Increases Counseling Capacity through Child Abuse Treatment Contract

Through a new five-year \$1.1 million contract with the California Office of Emergency Services, Huckleberry recently increased its capacity to provide therapy services to child victims in San Francisco and Marin. Huckleberry hired four new therapists who are able to offer services in English, Spanish, and Cantonese. In addition, we significantly expanded therapy services at all Huckleberry sites.

Greater counseling capacity at Huckleberry House substantially increases the amount of both individual and family therapy services sheltered youth receive. Multiple family meetings per stay allow more opportunity for family engagement and positively impact outcomes. Over the last twelve months, Huckleberry worked with an increased number of youth who were sexually trafficked and exploited. By working with our multidisciplinary crisis response team, Huckleberry effectively connects these hard-to-reach youth with therapeutic services. Huckleberry has also seen an influx in unaccompanied minor immigrant youth who are new to the United States. Many of these youth are navigating new family relationships with parents or relatives whom they either have never met or have not seen in many years. Huckleberry's highly capable team of therapists is trained to work with the unique situations presented in these families.



Two of Huckleberry's Marin Therapists.



San Quentin Inmates Help Huckleberry

In December 2016, members of the Huckleberry management team visited San Quentin's Kid C.A.T. (Creating Awareness Together) program after being referred to the program through community partners. Program members are San Quentin inmates who committed their crimes as children. Through the program, these men aim to restore the communities harmed by the poor choices they made as youth. The

stories of the journeys and experiences of these men are incredibly inspirational! Many commented that they wished a program like Huckleberry had been available to them when they were younger. Program members presented Huckleberry with hygiene packets meant for shelter clients at Huckleberry House and donated over \$1,000 to the agency.

Huckleberry Celebrates its Leadership Circle

Members of Huckleberry's Leadership Circle show their commitment to the mission and work of Huckleberry by donating \$5,000 or more (above and beyond their enthusiastic participation at agency events) each fiscal year. Our Leadership Circle members play a critical role in the long-term growth and sustainability of our programs by pledging to give at the \$5,000 level. The Leadership Circle collectively raised \$305,879 in FY2015-16.

On October 25, 2016, Huckleberry honored its Leadership Circle with a special event at board member Betsy Hausman's home. Chef Charles Phan, of San Francisco's famed Slanted Door restaurant, was in attendance, providing a cooking demonstration and fabulous food for all guests. As a result of events such as this one, along with a host of donor advocates, the number of Leadership Circle donors has more than tripled since 2015, growing from 10-34!

This year's Leadership Circle dollars supported the expansion of the Huckleberry Wellness Academy and development staff by hiring a Director of Advancement.



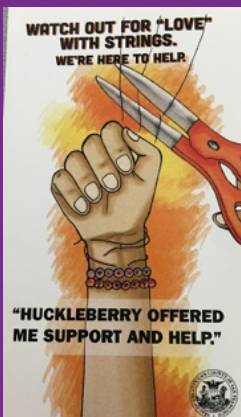
Charles Phan cooks with Huckleberry's Executive Director and Board Members

FY 2015-16 Leadership Circle members:

Dan Aguayo
Baker Family Charitable Trust
J.A. Barakos
Bruce Bodaken
Dan Carroll & Stasia Obremsky
Ernie Chow & Gwen Hinze
Mitchell & Susan Cohen
Bob & Christine Feibusch
FThree Foundation
Fullerton Family Foundation
Futures Foundation
Judy & Gregg Gibson

Steve & Donna Gothelf
Adriana Gores & John Lamm
Gomez Family Trust
Sallie Griffith
Jon & Linda Gruber
Jay & Judy Hearst
David Kirp
Marty Krasney
Leestma Family Foundation
Raymond and Joanne Lin
Scott Nagle
Bernie & Gail Nebenzahl

JaMel Perkins
Jerry Peters
Will Robinson & Lauren Uyeshiro
Douglas Robson
Alice Shaver Foundation
Alex Sloan
Lee & Perry Smith
Jeff Sosnaud & Jean Curran, M.D.
John & Junie Sullivan
Thomas F. White & TammySmith-White



Watch Out for "Love" With Strings

Huckleberry is an integral part of San Francisco's new Watch Out for "Love" with Strings public interest campaign. The campaign seeks to educate former and current victims of commercial sexual exploitation and those at-risk for exploitation. The campaign encourages anyone who feels threatened with exploitation to contact Huckleberry.

Huckleberry's Fiscal Year 2015/2016 Results



HEALTH & WELLNESS PROGRAMS

4,739 YOUTH

HEALTH EDUCATION WORKSHOPS
4,739 youth in 715 workshops across both counties.

574 YOUTH

COUNSELING SERVICES
574 youth participated in counseling services. 183 clients in family counseling. 164 in drug and alcohol counseling.

1,156 YOUTH

CLINICS
1,156 youth accessed primary, reproductive, and/or mental health services at Huckleberry Health Centers in both counties.

163 YOUTH

WELLNESS ACADEMIES
100% of the youth in our Huckleberry Wellness Academy graduated from high school and 100% of participants are enrolled in college this fall.

JUVENILE JUSTICE

287 CLIENTS

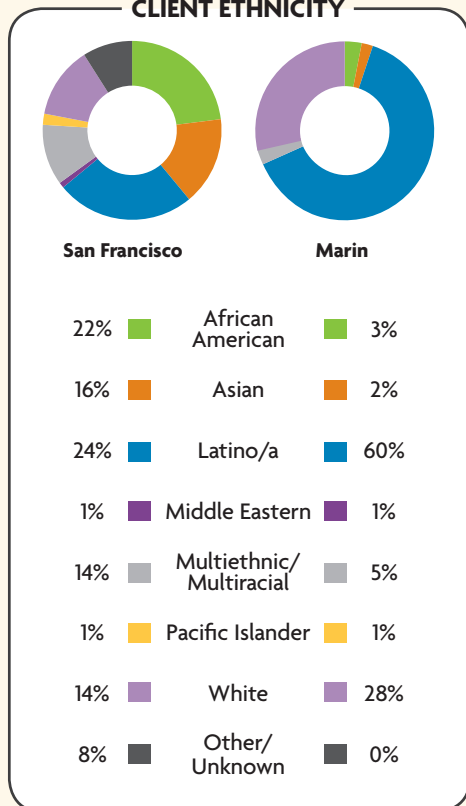
CARC (Community Assessment & Resource Center)
80% of the youth arrested and brought to Huckleberry's CARC were not rearrested within the year following completion of the program.

SHELTER

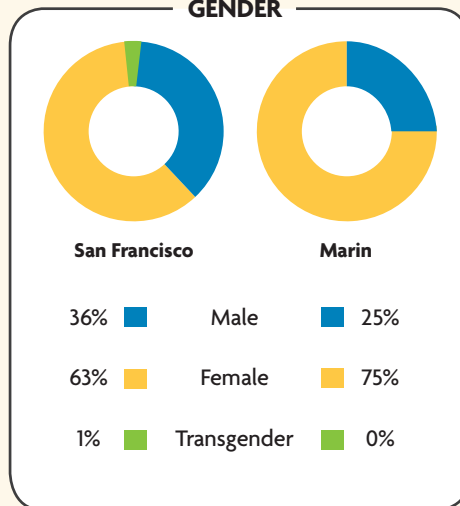
238 YOUTH

HUCKLEBERRY HOUSE
238 youth received shelter and counseling services. 96% of youth at Huckleberry House shelter exited to safe housing.

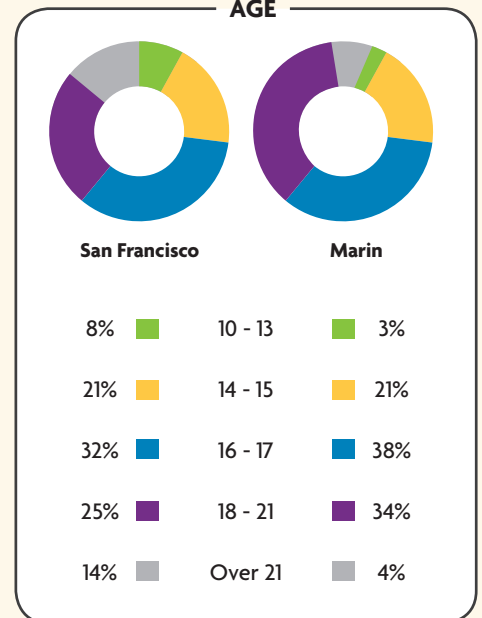
CLIENT ETHNICITY

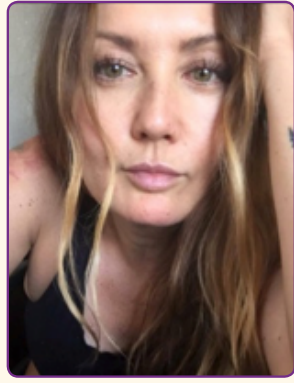


GENDER



AGE





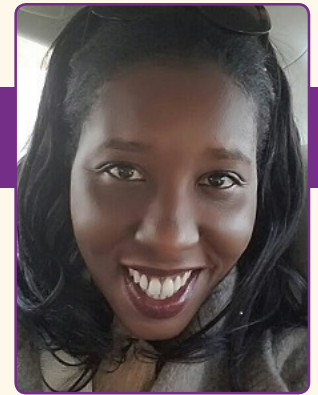
Johanna's Story

Approximately a decade after Huckleberry House opened its doors, Johanna began running away from home to escape an abusive home environment. "I was separated from my mother when I was two and a half and raised by my abusive father. I started running away when I was about seven or eight and I found living on the street was better than being at home. I had been beaten up and even ate out of a trashcan."

Johanna eventually found solace at Huckleberry House. "I was abused my whole life and when I went to Huckleberry House, it was the end of it. After Huckleberry House I was never abused by my father again. You guys helped me find a better place to live. At 18, I got my own apartment and just really started enjoying my life."

She credits the services she received at Huckleberry House for giving her a vision of what a normal, peaceful, and stable home environment could be. "I ended up OK because even though my childhood was rough I saw another side of life. Huckleberry House showed me what it was like to live in peace and I liked that - I loved it actually. I thought that's the life I want and it's the path I chose. I really can't thank you enough."

Now 47, Johanna is celebrating the 20 year anniversary of her own skincare business in San Diego and, "loves every single day of my life." She plans on donating profits to organizations like Huckleberry Youth Programs.

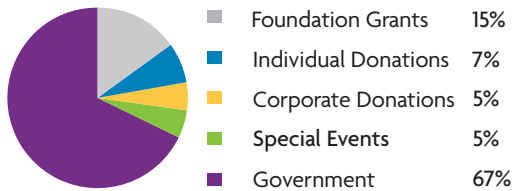


Welcome Anike!

Please join us in welcoming Anike Neverdon-Edmonds Coates, Huckleberry's new Director of Advancement. Most recently at Big Brothers Big Sisters in San Francisco, Anike comes to Huckleberry with many years of fundraising experience from her work at Bay Area and Chicago non-profits. Anike brings impressive experience in event planning, marketing and communications, and working with individuals and foundations. We are thrilled Anike has joined the Huckleberry team!

Statement of Operating Revenue & Expenses: 7/1/2015 - 6/30/2016

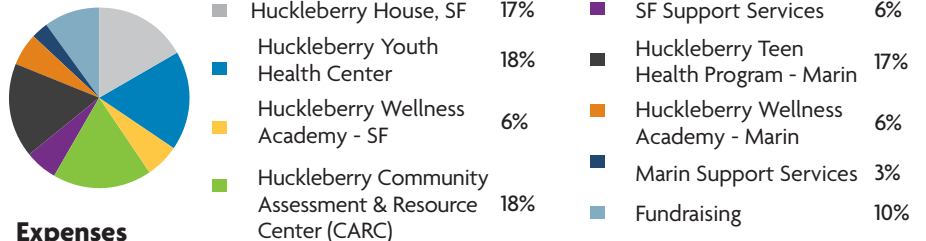
HOW WE ARE FUNDED...



Revenue and Support

Foundation Grants	\$ 845,550	15%
Individual Donations	\$ 383,077	7%
Corporate Donations	\$ 302,205	5%
Special Events	\$ 304,013	5%
Government	\$ 3,709,144	67%
Other	\$ 20,522	0%
TOTAL REVENUE	\$ 5,564,511	100%
Change in Net Assets	\$ 327,070	

HOW WE USE OUR FUNDING...



Expenses

Programs		
- Huckleberry House, SF	\$ 866,483	17%
- Huckleberry Youth Health Center	\$ 919,574	18%
- Huckleberry Wellness Academy - SF	\$ 292,715	6%
- Huckleberry Community Assessment & Resource Center (CARC)	\$ 953,236	18%
- SF Support Services	\$ 336,272	6%
- Huckleberry Teen Health Program - Marin	\$ 874,388	17%
- Huckleberry Wellness Academy - Marin	\$ 328,676	6%
- Marin Support Services	\$ 133,428	3%
Fundraising	\$ 532,669	10%
TOTAL EXPENSES	\$ 5,237,441	100%

Huckleberry Youth Programs, Inc.'s financial statements are audited annually. This condensed statement was extracted from audited financial statements. Complete audited financial statements are available upon request.



Run For The Roses 2016 Raised \$180,000 For Huckleberry!

THANK YOU TO OUR
GENEROUS TABLE CAPTAINS!

◆◆◆◆◆ TURF CLUB: \$5,000 ◆◆◆◆◆

Brian & Leslie Baker
Marianne Bamonte/MUFG Union Bank, N.A.
CSAA Insurance Group, a AAA Insurer
Jerry Peters
John & Junie Sullivan
Dyann Tresenfeld
Sutter Health CPMC

◆◆◆◆◆ MILLIONAIRES ROW: \$3,500 ◆◆◆◆◆

Chris & Jackie Gallo/Joseph & Sarah Gallo

◆◆◆◆◆ CLUBHOUSE: \$2,500 ◆◆◆◆◆

First Republic Bank

◆◆◆◆◆ GRANDSTAND: \$2,000 ◆◆◆◆◆

Rose Bentley
Matthew & Alison Dunn
Bruce Fisher & Marlene Litvack
Joel & Betsy Hausman
Jared Polsky & Debbie Levy
Sabina Shaikh
Umpqua Bank

THANK YOU

◆◆◆◆◆
to Everyone Who Hosted
Volunteer Fundraising Events
for Huckleberry in 2016!

Baseball Mary
Parker Brown
Cocktails for a Cause



The Cirque du Soleil Benefit Performance Raised Over \$125,000 for Huckleberry!

THANK YOU TO OUR GENEROUS SPONSORS!

\$5,000

Bruce Bodaken
Da Kitchen Café
Dodge & Cox
Excelerate Foundation
First Republic Bank
FIVEPOINT
Hanson Bridgett LLP
JMP Group
Michael Kidd & Kenneth Sloan
Pacific Service Credit Union
Jerry Peters
Rotary Club of Tiburon Sunset
Sabina Shaikh
Sutter Health CPMC
Dyann Tresenfeld & Ed Waldrup
The Whiting Family

\$3,800 - \$4,000

Carmen Castro-Franceschi &
Greg Franceschi
Pacific Union Community Fund

\$2,500

Backstrom, McCarley, Berry & Co., LLC
Mike & Gina Dowd
Friedkin Realty Group
Ashley Gould & Carlos Privat
Harrington Group
Fran & David Meckler
Howard & Barbara Miller
Valerie Pierce & Michael Stortz
Jared Polsky & Debbie Levy
San Francisco Federal Credit Union
Starboard TCN
John & Junie Sullivan



Fiscal Year 2015/2016 In-Kind Donors

1760 Restaurant	Expression Wines	Leaf and Vine Wines	San Francisco Playhouse
Adriane and Mike Armstrong	Favia Erickson Winegrowers	Ledson Winery & Vineyards	San Francisco Zoo
Adventure Cat Sailing Charters/Adventures	Fine Arts Museum of San Francisco	Lindsay Evans McGorry	San Jose Sharks
Airbnb	Foreign Cinema	LJS Productions	Sandmeep Surendran
American Conservatory Theater (A.C.T.)	Forman Vineyard	Madrona Manor	San Francisco Giants
Amoeba Music	Francis Ford Coppola Winery	Maldonado Family Vineyards	Schumacher Photography
Andrew Rodriguez	Frog Hollow Farm	Markham Vineyards	Seaplane Adventures
Ashton Vineyards	Gallo Family Vineyards	Matthiasson	Serpentine
Barnett Vineyards	Gary Danko	Metamorphosis Salon	SF Jazz
The Bay School of San Francisco	Golden Gate Capital	Michael Merrill Design Studio	Shafer Vineyards
Beach Blanket Babylon	Gomez Family Trust	Mina Group	Shari Eisenberg
Beach Chalet	Grand Sierra Resort & Casino	Morgan Winery	SHN Golden Gate Theatre
Berkeley Repertory Theatre	Green Chile Kitchen	Napa and Sonoma Valley Bike Tours	Sierra Fine Art
Betsy and Joel Hausman	Greg Wright	Napa Valley Train	Silver Stag Winery
Bi-Rite Family Business	Gundlach Bundschu Winery	Neiman Marcus Rotunda	Simraceway Performance Driving Center
Blue Waters Kayaking	Hafner Vineyard	Nicole Thye	Six Sigma Ranch & Winery
BPIA, Inc.	Hagafen Cellars	Nopalito	Smuin Ballet
Brian Swift	Hakkasan	Osmosis Day Spa Sanctuary	Sociale
Bruce Bewol	Hamel Family Wines	Pacific Catch	SOJOURN Cellars
Buena Vista Winery	Hanson Bridgett, LLP	Paintballtickets.com	Sojourn Ventures
Butterfly	Hanzell Vineyards	Pangloss Cellars	Sonoma Canopy Tours
California Academy of Sciences	Headlands Center for the Arts	Park Chow	Spirittera Vineyards
Chelsea Thurmond	Heidi Krahling	Park Tavern	Sports Basement
Cherin's Appliance	Ian Enriquez	Patxi's Chicago Pizza	Stanford Athletics
Chuck and Liz Leone	International Poster Gallery	Patz & Hall Winery	Stubbs Vineyard
Clif Family Winery	Jackson Family Wines	Paula Foley	Sunce Winery
COHO Wines	Jacuzzi Family Vineyards & The Olive Press	Pedroncelli Winery	Talisman Wines
Comforts	Jamieson Ranch Vineyards	Peju Province Winery	Terris Barnes & Walters
Concannon Vineyard	J'Amy Tarr Outerwear	Peppermill Reno	The Boxing Room
Dan and Sue Spradling	Javier Portillo	Perbacco Ristorante & Bar	The Exploratorium
Dan Vu	Jennifer Tuton	Perry's	The Futures Project
David Arthur Vineyards	Jerry Peters	Phoenix Hotel	The Girl & The Fig
Desa Fernandez	John and Junie Sullivan	Pier 39	The Maas Clinic
diPietro Todd Salon	Jones	Pizza Antica	The Olympic Club
Dobbs Ferry Restaurant	Joe Betz	Pope Valley Winery	Trione Winery
Dogpatch Wine Works	Kathy Kamei Designs	Quixote Winery	Urban Sitter
Draper & Esquin Wine & Spirits, LLC	Kendric Vineyards	Raff Distillerie	Viluko Vineyards
Dry Creek Vineyards	Kevin Arnold	Richmond Country Club	Vintage Wine Estates
Duckhorn Vineyards	Kevin Wright	Rio Crest Winery	W Hotel
Dyann Tresenfeld	Kosta Browne Winery	Ritz Carlton-San Francisco	William Nolan Highbaugh and Janet Ogata
En Garde Winery	La Mar Cebicheria Peruana	Rose Bentley	Yank Sing Restaurant
Epic Roasthouse	Ladera Vineyards	Rose Pistola Restaurant	
	Lamborn Family Vineyards	Rusack Vineyards	
	Latham & Watkins LLP	San Francisco 49ers	
		San Francisco Fire Department	

Huckleberry's Generous Donors (July 1, 2015 to June 30, 2016)

Huckleberry acknowledges the generosity of our donors, without whom the work we do would not be possible. We apologize for any unintended omissions.

Individuals

\$20,000 & above

Mitch and Susan Cohen
Raymond and Joanne Lin

\$15,000 - \$19,999

Jon and Linda Gruber
Jerry Peters
John and Junie Sullivan
Dyann Tresenfeld and Ed Waldrup

\$10,000 - \$14,999

Dan Aguayo
Bruce Bodaken
Dan Carroll and Stasia Obremsky
Gregg and Judy Gibson
Jay Hearst
David Kirp
JaMel Perkins

\$5,000 - \$9,999

Marianne Bamonte
J.A. Barakos
Bob and Christine Feibusch
Adriana Gores and John Lamm
Steven M. Gothelf
Sallie Griffith
Marty Krasney
Scott Nagle
Bernard and Gail Nebenzahl
Will Robinson and Lauren Uyeshiro
Doug Robson
Michael and Marcia Rubenstein
Sabina Shaikh
Alex Sloan
Jeff Sosnaud and Jean Curran, M.D.
Les Tomita
Thomas F. White and Tammy Smith-White

\$2,000 - \$4,999

Anonymous
Andy and Marcia August
Rose Bentley
Joe Betz
Nora Blay
Warren Browner
Danielle and Eric Cagan
Wendy Coblentz and James Lowy
Donald O. & Ronald R. Collins Fund
Matt and Alison Dunn
Oz Erickson and Rina Alcalay
Bruce Fisher and Marlene Litvak
Greg Franceschi and Carmen Catsros-Franceschi
Joe and Sarah Gallo
Alison Geballe
Dennis and Susan Gilardi
Tiffany Gomez
Heather Hanly and Dan Purcell
Betsy and Joel Hausman
Bill and Gail Hutchinson
Joe and Kathleen Jolson
Lempel Family Gift Fund
Chuck and Liz Leone
George and Myrta Matula
Fran Meckler
Laura Menicucci
Leon Metz
Howard and Barbara Miller
Tim Muller
Valerie Pierce and Michael Stortz
Jared Polsky and Debbie Levy
William Price
Harry and Karen Rosenbluth
Donald H. Rubin and Olympia Martyn

Lee C. and Perry Smith
Allen R. Thorpe
Mary Voigtsberger
William Price

\$1,500 - \$1,999

Anonymous
Woody and Connie Baker-Cohn
Carol Banquer
George and Teta Collins
Joanne Ferris
Kathy and Gary Grady
Martin and Beth Katz
William and Barbara Peterson
Neil Rudolph and Susan Cluff
Ruthie Tane
Scott and Barbara Waxman
Hank and Susan Wirta
Greg Wright

\$1,000-\$1,499

Richard Adams
Antonio Baca and Dimitri Fillos
Leah Barvels
Craig Burke and Molly Lazarus
Jean Coblentz
Ruth Cowan
Robin Critelli
James and Claire Davis
Matt and Kelly Ferriss
Morton and Amy Friedkin
Carolyn Friedman
Phil and Leslie Gardner
Karen and Nate Goore
Glen and Gail Greenfelder
Richard Grey
William and Barbara Hazen
E. Alan Holroyde
Richard and Anja Hyman
Christopher Lane
Rita and Terry Lanphier
John Lee
Joe and Jill Lervold
Lauren Loney and David Gunning
David Longinotti
Lou and Norma Magallon
Krista Mahlberg
Michael and Georgie McConnell
Julia Rimas
Leah Rosenkrantz and Jeff Bluestone
Stephen and Marcia Ruben
Marian Rubin
Scott and Dina Smith
Diane Snedaker
Richard and Linda Stubblefield
Kenneth Styles
Lou and Allison Vasquez
Susy Vrouvas
Dede Wilsey
Art and Janet Wong
Gary and Linda Zellerbach

\$500-\$999

Angela Acchione
Linda and Jeff Aldrich
Anonymous
Barbara Blasdel and Eugene Alexander
Ethan Bold
Parker Brown
Don and Susie Bull
Bill and Maria Carlile
Andy Coblentz and Shari Libicki
Robert and Martha Copeland
Jeffrey Demartini
Jacqueline Fagerlin
Virginie Fite-Georgel
Ben and Katie Fort

Don and Marcy Ginsburg
Mark Goldrosen
Christina Hall and Peter Wald
Scott Halliday
Lily Ho
Jack and Genevieve Hoffman
Gail Jackson McCray and Reverend James McCray
Melissa and Ken Jones
Susan King
Leslie and Michael Krasny
David Kremer and Marla Miller
Lauren Loney and David Gunning
Steve and Mary Jane Lowenthal
Thomas Lumsden
Aly Makishima
Shelley and Paul Miller
Vicki and John Nelson
Thao Nguyen
Susan Obata
Danielle Payton
Carlos Privat and Ashley Gould
Susanne Rivera
Susana Ryan
Louise Schneider
Leslie Serra
Mary-Ann and Richard Shafer
Richard and Jill Sideman
Julia Solis
Mike Stafford
Mary Szczepanik and Matt Agard
Janet Traub
Stephen Traykovski
Susheela Vasani
Janice Wood
The Worley/Mitchell Family

\$250-\$499

James Annunziata
Anonymous
Adriane and Mike Armstrong
Mauna Arzen and Nick Tarlson
Andi and David Arrick
Betsy Aubrey and Steve Lichtenberg
Henry F. Bannister and Kyoko Watanabe
JoAnna Barnes
Chip Bergh
Jeffrey Bernstein
Leonard Berry
Dick and Diane Blackman
Charles and Laura Boettcher
Margaret and Henry Brodskin
Jim Chanin
Kimberly Coates
Price Cobbs
Thomas Coyne
Jeanne Dinkelspiel
Mark Dober
Jeffrey and Susan Englander
Catherine Evans
Nancy Field and Kyle Anderson
Rachel Fierberg
David and Vicki Fleishhacker
Robert and Carol Freidenberg
Mark Gibson and Jane Yao
Joel Guillian
Theresa Hall
Syed and Shama Hasib
Andrea Hayes
Jesse and Kristin Herzog
Oliver Holmes
Victor and Lorraine Honig
John Hooper
James C. Hormel and Kathleen Hormel
Mark and Lori Horne

Allen Hovious
Kristie and Matt Irwin
Carolyn Kataoka and Robert Kaplan
Barbara and David Kimport
Brian Kuepper
Robert Kustel
Preston and Mary Ann Lentz
Nhung Lethi
Tammie Lewis-Sansano
Corey Limbach and Paula Smith
Stuart Lipton and Melanie Gnazzo
Leonard Lloyd
Virginia Lopez and Roger Low
Kathleen and Dexter Lowry
Drew and Michelle Malone
Bernie and Leslie Martin
Kelly McLoughlin
David Melnick
Gale Mondry and Bruce Cohen
Peter Murphy
Margo Murray and David Fox
Dan O'Neill
Gina Pan
E. Saul Pena
Dana Pepp
Peter Pollat
Eddie Pun
Angela Rando
Vijay Rao
Julie Roberts
Shauna Marie Rose and Raymond Sullivan
James and Nancy Saunders
Robert and Barbara Scavullo
Donald and Beverly Steffen
Andrew Stoltzfus
Vidya Subramanian
Laura Talmus and Ace Smith
Eugene and Julia Tao
Marina Tao
Shahnaz Taplin and Carl Pope
Stephen and Britt Thal
Dick Ulmer
David Weiss
Elisabeth Wilson
Charles J. and Frances Wisch
Ward Wolff
Charles Wyman and Megan Pickett
Emerald Yeh and Ron Blatman

\$100-\$249

Michael and Nancy Alvarez
Arthur Andreas
Eileen Argentina
Patricia Avery
Kundan Baidwan
Teresa Bastian
Alvin Baum Jr.
Madeline Behrens-Brigham
Teena Berman and Owen Hart
Judith Bernhard
Joan and Burton Berry
Chris Binstadt
Harold and Alisa Blajwas
Steven Blumlein and Arlyne Charlip
Heather Booms
John Borelli
C.A. Bowers
George Bradley
Bonnie Bright
Lindsey Brown
Mollie Brown
Sandra Brown
Krista Brugnara
Peter and Elaine Bull
Jennifer and Rob Chen

David Churton
Don and Lisa Clay
Elly Cohen
Mary Coyne Costello
Steve Coulter
Peggy Da Silva and Dan Hodapp
Jerry Day
Christine DeVoto
Ann Dey
George and Roseanne Dobbins
Stefaniya Dragova
Maxwell and Jan Drever
Stewart Duboff
William Duffly
Marriner Eccles
Audrey Egan
Polly Elkin
David and Judy Epstein
Paul and Laura Escobosa
Ericka and Mark Fagerlin
Lois Feller
Gary Fiedel
Robert and Ellen Freeman
Richard Fulks
Diane Garber
Rhonda Giardini
Denis Gleason
Eric Goldman and Laurie Weisberg
Steven Gomberg
Kim Griffin
Blake Hallanan
Sheila Harris
Eric Hautemont
Peter and Barbara Hearst
Tom Heller
Arlene Henry
William Nolan Highbaugh and Janet Ogata
Jim Illig
John and Irene Ingersoll
Charlotte Johnson
Loretta Jones
Robert Daniel Trevor Jones
John Kanberg
Katie Karp
Sonya Kashyap
Jon Keene and Susan Andrus
Heidi Kennedy
James Ketsdever
The Kirchofer Family
Douglas Kott
Athena Kyle
Kenn Lau
Hans Levi
Jane Levi
Ronald and Sandra Linder
Dorothea Loux
Alexander Magid
Robert Margolin
Jim Mashburn
Gail Mejeur
Spencer and Roberta Michels
Ted Mitchell and Tanya Slesnick
David Monetta
John and Martha Mouer
J.K. Myers
Carol Nathan
Richard Nathan
John Norris
Alan Page
Kay Pellicciarini
Janis Penton
Lindsey Phillips
Vivian Podesta
Julia Poelstra
Laurie Poett

Tucky Pogue
 John and Kittina Powers
 Nancy Pratt
 Tom Price
 Raymond Quan
 Stewart Ramsay
 Ruth Ramsey and Steven Ramsland
 Robert and Patricia Ravasio
 Sandra and Jeffrey Reid
 Jim and Cathy Robertson
 Benjamin Rombro
 Christina Rosetti McArthur
 Sarita Satpathy
 Lary and Judy Schiller
 Nina Schwartz
 Whitney Selfridge
 Jo Ann Shain
 Sandra Shapiro
 Susan Shargel
 Steven Shatz and Nina Rivkind
 Aglae and Andy Shaw
 Frances Shell
 Liz Shipman
 Alex Shmelev and Robin Beck
 William B. and Shira Shore
 Frederick Siegel
 Rebecca Smullin
 Neil Solomon
 Tania and Michael Stepanian
 Stanley and Karen Stern
 Julia Strauss
 David and Barbara Styles
 Eileen Sweeters
 Brooke and Eric Tao
 Karen Tao
 Christopher Tatrow
 Raymond Taylor
 Libby Thaler
 Cecilia Thomas
 Victoria Valentine
 Girish Vasavada
 Melanie Velasi
 Charles and Marilyn Vella
 Margaret and Ralph Voorhees
 Michael and Johanna Wald
 Gene Weber
 Elana Weinberg
 Tom Wentworth
 Jean Winn
 Roni Yarnot
 Todd and Diane Ziesing
 JoAnn Zlatunich

Up to \$99

Maureen Alano
 Maya Amerson
 Michael Anderson
 Anonymous
 Mahin Aratsu
 Tom and Lois Ashley
 Virginia Baldwin
 Patricia Barraza
 Marilyn Ann Bayer
 Elizabeth Blersch
 Leagrey Dimond-Thidwick Books
 Norman Budman
 Brian Bullard
 Jennifer Canale
 Beverly Cantello
 Joseph Carcello
 Lisa Cardellini
 Christopher Cassidy
 Norman Charles
 Genevieve Chow
 Andrew Clemenza
 Denise Coleman

N M Crafts
 Vicky Currey
 A J Davenport
 Lynn Diane De Kerchove
 Mark and Heather Deixler
 Dolores Dietz
 Shawna Dobson
 Thomas Drohan
 Edward Dzialo
 Beth Eberl
 Albert Evers
 Kathey Flynn
 Mary Foran
 Diane Fraser
 Richard Frattali
 Richard Gale
 Jesus Garcia
 Bobbi Giampaoli
 Tiffany Gibbs
 Fred Grange
 Lorrie Greene
 Harriette R. Grooh and Tom Escover
 Nathan Grossman
 Scott Gursky
 Steven Haase
 Sandy Hammond
 Wendy Hannum
 Steven Hanson
 John Hules
 Donald and Virginia Humphreys
 Gwen Huus-Henriksen
 Matthew Jenkinson
 Rita Jeremy and Barry Gurdin
 Kathy Kamei
 Mike Kappus
 Carolyn and Frederick Klemeyer
 Laurie Kyser
 Barbara Lane
 James Langdell
 Matthew Layne
 Natalie Lee
 Robert and Naomi Leonard
 Debbie Lerman
 Benjamin and Trudy Leung
 Tawnia Litwin
 Nikki Lowy
 Laureen Maacks
 Jim Malaspina
 Stephen Markarian
 Heather Mathews and
 Rory Thompson
 Judy Mayne
 Gloria McCray
 Paula Mehoves
 Bill and Sandy Mixsell
 Lynn Morris
 Rhonda Morris
 Robyn Nettis
 Eric Nieters
 Patrick O'Leary
 Robert Steven Pawlak
 Anne Politeo
 Michael Postolache
 Stephanie Powell
 Maria Felisa Ramiu
 Andres Rios
 William Rogers and John Symons
 Jessica Romm
 Dan and Cindy Rosenheim
 Teresa Ruter
 Merle Saber
 Scott San Filippo
 Norman Schlossberg
 Gayle Schmitt
 Nicholas Schneir
 Kathleen Schultz

Janet Shalwitz and Burt Feuerstein
 Niel Shay
 Tracy Hinman Sigrist
 Sean and Pam Silverman
 Becky Skaife
 Heather and Samant Sridharan
 Cathie and Paul Staley
 Debbie Stevens
 Irene Stofan
 Jeanne Stovroff
 Janine Sullivan
 Katherine Thomas
 Susan Thompson
 Matthew Valazza
 Sally Ann Waters
 Gay Weake
 Marlena Weinstein
 John Whorton
 Ally Williams
 Julia Wilson

Corporations, Businesses & Organizations

\$50,000 & above

Gilead Sciences, Inc.
 Kaiser Permanente Northern California Community Benefit Program

\$20,000 - \$49,999

eScrip
 Federal Home Loan Bank of San Francisco
 Union Bank Foundation

\$10,000 - \$19,999

Giants Community Fund
 Macy's Foundation

\$5,000 - \$9,999

Adobe Systems Inc.
 CSAA Insurance Services Group/LLC
 Dodge & Cox
 First Republic
 Hanson Bridgett, LLP
 JMP Securities
 Kaiser Permanente
 Pamakid Runners
 Project Inform
 Rotary Club of Tiburon Sunset
 Sutter Health CPMC
 The Morrison & Foerster Foundation
 TJX Foundation, Inc.
 Umpqua Bank
 US Bank
 Wells Fargo Foundation

\$2,500 - \$4,999

Backstrom, McCarley, Berry & Co. LLC
 Bank of America
 Harrington Group
 Heffernan Foundation
 In-N-Out Burger Foundation
 Latham & Watkins LLP
 Oyster Development Company
 Pacific Union International
 Payroll Resource Group
 Robbins Geller Rudman & Dowd
 Salesforce.com
 Starboard TCN

\$1,500 to \$2,499

Artifex Software, Inc.
 Comerica Bank
 Safeway Foundation

StreetSmart4Kids
 UCSF

\$1,000 - \$1,499

Bank of Marin
 Bassing Painting
 Community Thrift Store
 Girl Scouts Troop 62423
 National Council of Jewish Women - San Francisco
 Paragon Real Estate Group
 PG & E-Foundation
 UBS

\$500-\$999

Allianz Global
 Apple
 Brandeis-Marín
 Eileen Fisher
 Jackalope
 National Safe Place
 Office of the Mayor, City and County of San Francisco - in Honor of Pope Francis
 Peet's Coffee
 San Francisco Giants

\$250-\$499

Exponent Partners
 Expression Wines
 Patxi's Chicago Pizza
 Tabernacle Community Development Corporation

Up to \$249

AT&T Foundation
 BlackRock
 Chevron
 Cisco Systems
 Dropbox, Inc.
 Lucky Elephant
 Mainsail Management Company
 S.F. Spine Relief Center
 Levi Strauss & Co.-Texas
 University High School
 Wells Fargo Community Support

Foundations

\$100,000 & above

Anonymous
 California Wellness Foundation
 William & Flora Hewlett Foundation
 Marin Community Foundation

\$50,000 to \$99,999

Five Bridges Foundation
 Frances K. and Charles D. Field Foundation
 Kimball Foundation
 Metta Fund

\$20,000 - \$49,999

Baker Family Charitable Trust
 Crescent Porter Hale Foundation
 Eucalyptus Foundation
 GGS Foundation
 David B. Gold Foundation
 Peter E. Haas Jr. Family Fund
 Milagro Foundation
 Mount Zion Health Fund
 Project Inform
 George H. Sandy Foundation
 The San Francisco Foundation
 Alice Shaver Foundation
 Morris Stulsaft Foundation

\$10,000 - \$19,999

The Isabel Allende Foundation
 The Futures Project
 William G. Gilmore Foundation

Gomez Family Trust
 The Stanley S. Langendorf Foundation
 Alexander M. and June L. Maisin Foundation
 Miranda Lux Foundation
 The Nick Traina Foundation

\$5,000 - \$9,999

Charles See Foundation
 Elizabeth Taylor AIDS Foundation
 Evelyn & Walter Haas Jr. Fund
 FThree Foundation
 Fullerton Family Foundation
 Leestma Family Foundation
 Leo S. Guthman Fund
 Walter and Elise Haas Fund
 San Francisco Public Health Foundation
 Elinor Smith Charitable Trust
 William Gorrill Swigert Foundation
 Van Loben Sels/RembeRock Foundation

Up to \$4,999

Community Safety Foundation
 Genentech Foundation
 Hilltop Foundation
 1997 Horowitz Family Trust
 Humanist Fund
 McConnell Family Foundation
 The Lisa and John Pritzker Family Fund
 Rein Family Foundation
 Rotasa Foundation
 Rough-J-Ranch Foundation
 Skoll Global Imperatives

Public Funding Sources

Federal Grants & Contracts

US Department of Health & Human Services, Administration for Children & Families
 US Department of Justice, Office of Violence Against Women

State Grants & Contracts

Essential Access Health
 California Office of Statewide Health Planning & Development
 California Office of Emergency Services

San Francisco Contracts

SF Department of Children, Youth & Their Families
 SF Department of Public Health, Community Behavioral Health Services
 San Francisco Human Services Agency
 San Francisco District Attorney's Office
 San Francisco Unified School District

Marin Contracts

Marin Board of Supervisors
 Marin Department of Health & Human Services:

- Division of Public Health
- Division of Alcohol, Drug, & Tobacco Programs
- Division of Community Mental Health

San Rafael High School
 Tamalpais Union High School District



HUCKLEBERRY



PROGRAMS

SAFETY • HEALTH • JUSTICE • EDUCATION

Huckleberry Youth Programs Board of Directors

PRESIDENT

Leonard Berry

Backstrom, McCarley,
Berry & Co., LLC

CO-VICE PRESIDENT

Jackie Fagerlin

Attorney, The Cardoza Law Offices

CO-VICE PRESIDENT

Rose Bentley

VP of Sales and Customer Success,
Satmetrix

TREASURER

Leon Metz

CPA, Delagnes, Mitchell & Linder, LLP

SECRETARY

Sabina Shaikh

VP of Global Alliances, Salesforce

Kiyomi Ameriks

Child and Adolescent Psychiatrist,
Kaiser Permanente

Adriane Armstrong

Chief Operating Officer,
JUMA Ventures

Tony Baca

Associate Director, Clinical Finance,
Puma Biotechnology, Inc.

Marianne Bamonte

Managing Director & Head of Global
Trust Services, MUFG Union Bank

Nora Blay

Healthcare Consultant

Wendy Coblentz

Community Volunteer

Danielle Cagan

Corporate Communications and
Public Affairs Executive, CSAA
Insurance Group, a AAA Insurer

Matt Dunn

Managing Director and Head of
Digital Marketing,
Morgan Stanley Wealth Management

Tiffany Lee Gomez

Senior Counsel, Gap, Inc.

Ashley C. Gould

SVP Government Affairs, Chief
Legal & Compliance Officer,
Raptor Pharmaceuticals

Nolan Highbaugh

General Counsel, KIPP Foundation

Betsy Hausman

Community Volunteer

Lily Ho

CitiGroup Wealth Management,
Citigold National Sales Operations
Administration

Gail Jackson-McCray

Owner-Principal Attorney
Jackson-McCray Law Offices

Elizabeth Leone

San Domenico Upper School (Ret)

Lou Magallón

Mortgage Consultant,
Wells Fargo Home Mortgage

Thao Nguyen

Director, AGS Analytics and
Planning, Adobe Systems

Jerry Peters

General Counsel, CalNDEX

Jared Polsky

Polsky Perlstein Architects

Raymond Quan

Vice President & Area Manager,
Umpqua Bank

Jeff Sosnaud

Nonprofit Organization Consultant

Susheela Vasan

Managing Director,
Vasan Consulting

Huckleberry Youth Programs Staff

Administration

Executive Director

Douglas Styles

Associate Executive Director, Marin

Programs
Jasmine Stevenson

Program & Community Development

Mollie Brown

Research & Evaluation

Elizabeth Ascher

Data Management Coordinator

Quyen Le

Fiscal Director

Bruce Rice

Director of Finance and Administration

Matthew Bandiera

Accounting Manager

Frances Shell

Senior Bookkeeper

Vera Petrakovsky

Executive Assistant/HR Coordinator

Amanda D'Egidio

Development

Director of Advancement

Anike Neverdon-Edmonds Coates

Major Grants

Jennifer Chen

Fundraising

Brooke Tao

Communications

Heather Mathews

Development Associate

Gina Pan

Advancement Specialist

Amy Carlson McConnell

Special Events & Media Coordinator - 50th Anniversary

Lisa Graham

Huckleberry Community Assessment & Resource Center

Director of Juvenile Justice Programs

Denise Coleman

Program Director

Stacy Sciortino

Case Managers

Imelda Acosta
Karina Almdarez
Edwin Bernardez
Gloria Musto
Arsenio Hernandez-O'gilvie

Night Case Managers/Data Entry

Jorge Rodriguez
Anastasia Worley

Psychotherapists

Meghan Kearney
Kisai Henriquez

Huckleberry Youth Health Center - SF

Director of Health Services - SF

Jackson Bowman

Community Health Coordinator

Emmanuel Dejesus
Ashely Rojas

Intervention Services Coordinator

Carly Devlin

Intervention Specialists

Kailey Norris
Ciara Garland
Frances Vejar

Community Health Workers

Jerroyn Collings
Ruby Melgoza

Health Educators

Dwana Schaedlich
Kala Heekin
Jessica Linares

Client Services Coordinator

Monica Sheftel

Psychotherapists

Vanessa Brown
Jia Broussard

MSW Intern

Sophia Argueta

Huckleberry Wellness Academy - San Francisco

Senior Director of Wellness Academies

Vicky Valentine

Academic Case Managers

Tomas Boatwright
Vania Tong

Psychotherapist

Victoria Ng

Huckleberry Wellness Academy - Marin

Program Director

Priscilla Miranda

Coordinator

Armando Franco

Student Support Assistant

Danielle Payton

Huckleberry Youth Health Center - Marin

Clinical Director - Marin

Susan Quigley

Director of Community Health

Jaclynn Davis

Substance Abuse Counselor

Shawna Dobson

Psychotherapists

Claudia Benitez
Judy Scherwin

AmeriCorps Health Educators

Emma Cohen
Kaitlyn Custer

Huckleberry House

Program Director

Katie Reisinger

Residential Coordinator

Patrick Buckalew

Clinical Director - SF

Margo Levi

Assistant Clinical Director

Alexandra Geary-Stock

Psychotherapists

Jay Boronski
Christina Velasco

Case Manager

Corrine Limbach

Residential Counselors

Michael Carnevale
Celia Fernandez
Maren Trotter
Becca Welna
Ricardo Alvarez
Michelle Lapitan
Kimberlin Borca

AmeriCorps Residential Counselor

Assistants

Ruby Hwang
Raymond Bayani
Tanishq Rajan

Relief Counselors

Frances Salovino
John Daniel
Corey Bigoni

